

# SMART INSIGHT

Confident Compliance. Connected Intelligence.



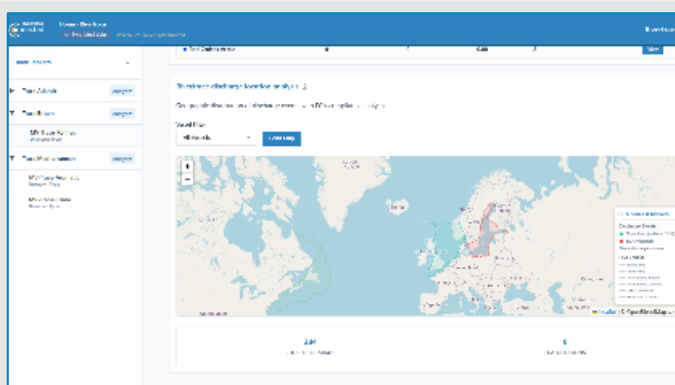
SMART Insight is a cloud-based **fleet intelligence platform** that transforms oil-in-water compliance data into real-time visibility and insight. As part of the **Rivertrace Connected ecosystem**, it integrates directly with SMART BILGE+ and SMART ODME systems to automatically capture, organise and analyse MARPOL Annex I data across individual vessels and entire fleets—securely and in real time.

Managing compliance today is increasingly complex. Data is often fragmented across vessels, systems and manual records, limiting visibility for shore-based teams and making inspection readiness reactive rather than proactive. This lack of transparency can lead to inefficiencies, increased workload for crew, and heightened risk of non-compliance under growing regulatory scrutiny.

SMART Insight addresses this by centralising compliance data into a single, intuitive platform. By automatically collecting and structuring data from onboard systems, it provides real-time dashboards, trend analysis and early visibility of potential risks. This enables operators to move from manual record-keeping to proactive fleet management—reducing workload, improving accuracy, and ensuring consistent, inspection-ready compliance across the fleet.

## Key Benefits

- Gain **real-time fleet visibility** with centralised compliance data across all vessels.
- Ensure **inspection-ready compliance** with accurate, consistent and fully traceable records.
- **Reduce crew workload** by eliminating manual data collation and reporting tasks.
- **Identify risks** early through live monitoring, alerts and trend analysis.
- Improve **operational efficiency** with faster, data-driven decision making.
- Enable **scalable digitalisation** with a platform designed for connected fleet operations.



# SMART INSIGHT

Confident Compliance. Connected Intelligence.

## Data Capture

- **Oil-in-water concentration (ppm)** - High-resolution measurement data from the SMART oil content monitor
- **Overboard flow rate** - Verified discharge flow data from the connected flow meter
- **GPS position and time stamps** - Location-verified discharge records for full traceability
- **System status and alarms** - Including start/stop events, alarms and operational changes
- **IMO / MEPC.107 operational logs** - Structured records aligned with regulatory expectations

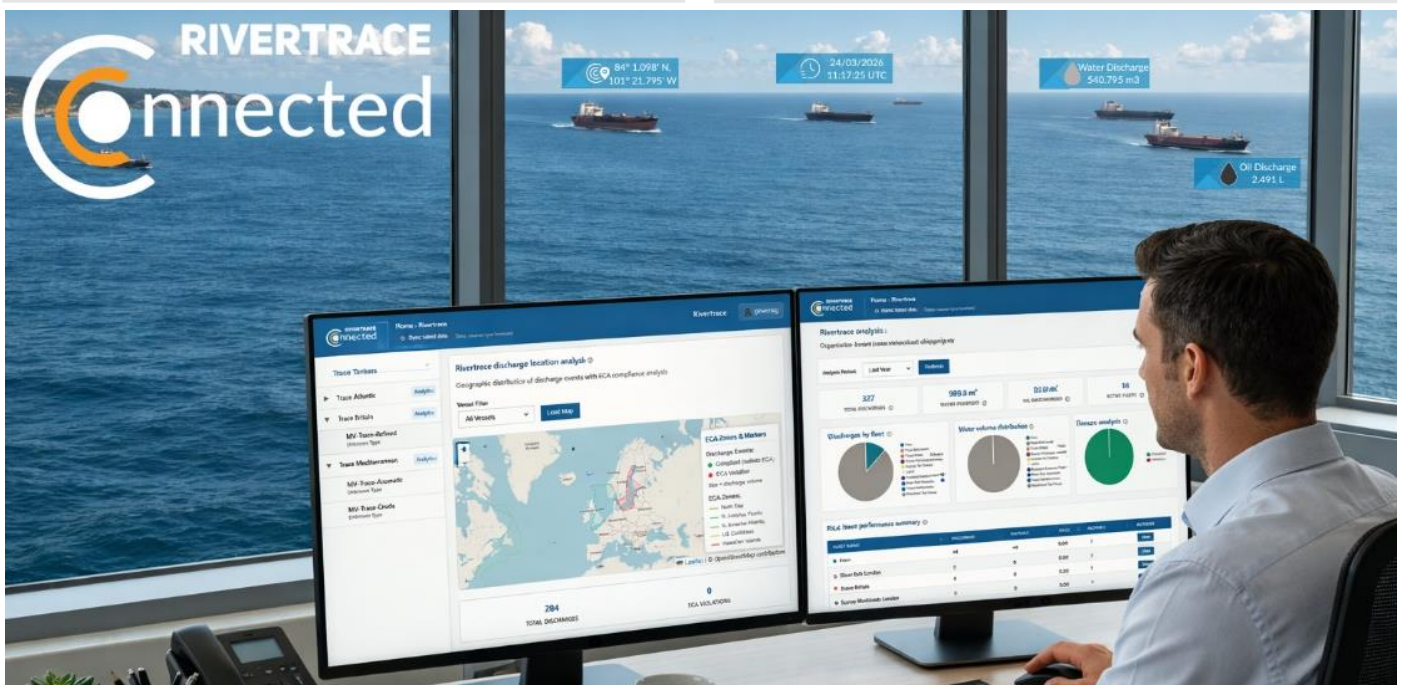
## Rivertrace Connected

SMART Insight is a core element of the Rivertrace Connected ecosystem:

- **SMART BILGE+** - Certified 15ppm monitoring
- **SMART ODME\*** - Discharge monitoring and control
- **SMART CONNECT** - Data interface to digital systems
- **SMART INSIGHT** - Fleet intelligence and analytics

From sensors to decisions - fully connected.

\*SMART ODME integration with SMART Insight is currently under development and planned as part of the future roadmap.



## SPECIFICATION

**Onboard PC Requirements:** CPU: Dual-core x86-64 (Intel/AMD),  
RAM: 8 GB,  
Storage: 32 GB SSD,  
Network: Wired Ethernet

**Operating System:** Windows 11 Pro (64-bit)

**Connectivity:** Outbound HTTPS only, no inbound ports required

**Security:** Designed in alignment with IACS UR E26/E27 cybersecurity principles

## Confident Compliance. Connected Intelligence.

SMART Insight does more than organise compliance data. It transforms regulatory monitoring into a strategic operational asset.

By centralising high-resolution discharge data, system status, and trend analytics, SMART Insight enables measurable efficiency gains across fleet operations – while significantly reducing environmental compliance risk